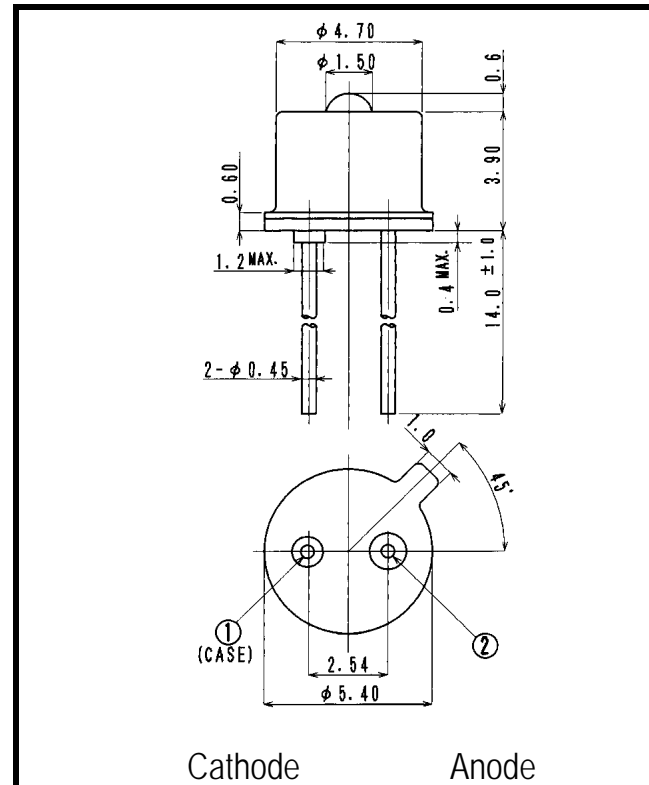
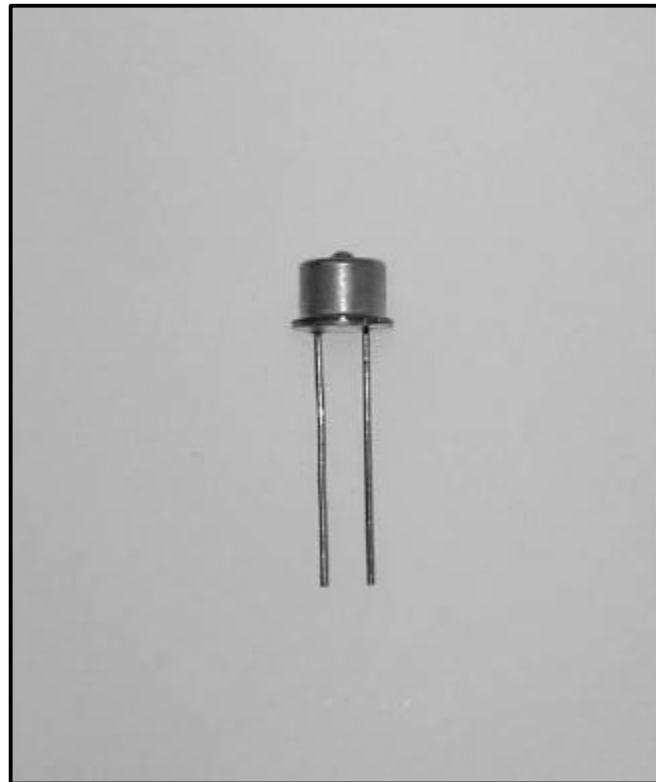


LSB884SL1 -550G

Point Source LED



Cathode Anode
Dimensions (Unit:mm)

- FEATURES**
- Point-Source LED
 - Emitting Window Dia. 50 μ m
 - High-output Power
 - Double-Lens
Ball-Lens & Focusing-Lens
- APPLICATIONS**
- Optical Communications
 - Fiber Optics

1. ABSOLUTE MAXIMUM RATINGS (Ta=25)

ITEM	SYMBOL	RATINGS	UNIT
Forward Current (DC)	IF	80	mA
Forward Current (Pulse)*1	IFP	0.4	A
Reverse Voltage	VR	5	V
Power Dissipation	PD	150	mW
Operating Temp.	Topr	-30 TO 85	
Storage Temp.	Tstg	-40 TO 100	
Junction Temp.	Tj	100	
Lead Soldering Temp.*2	Tls	260	

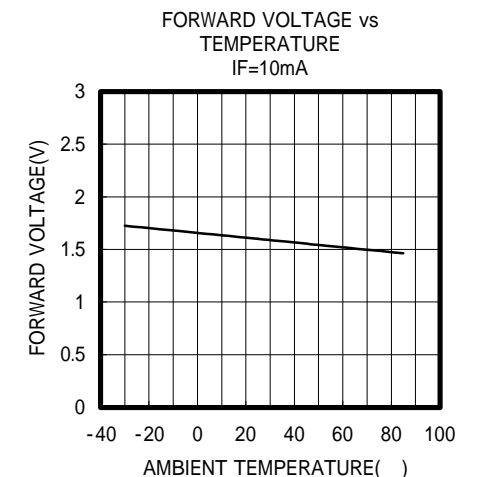
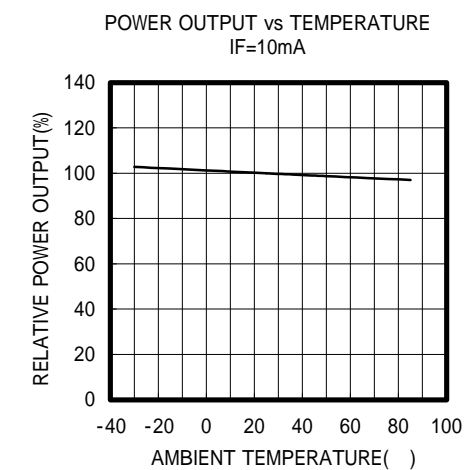
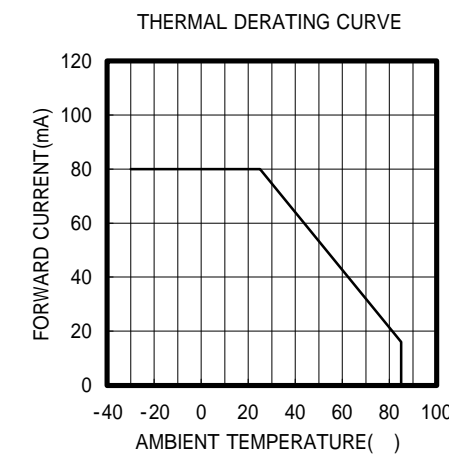
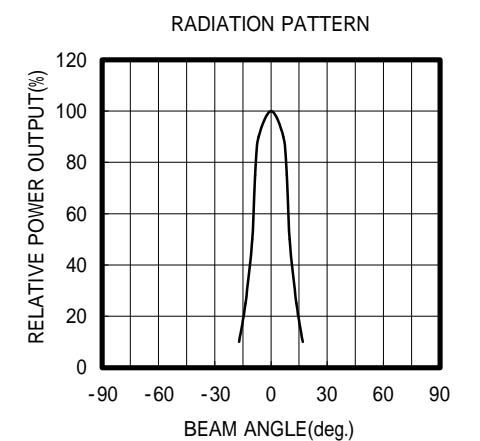
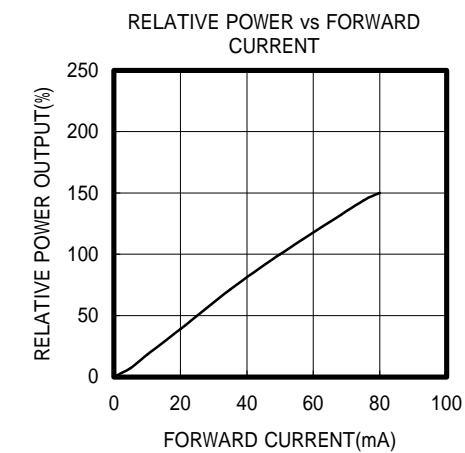
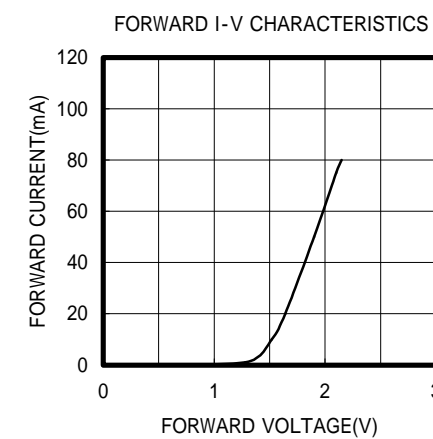
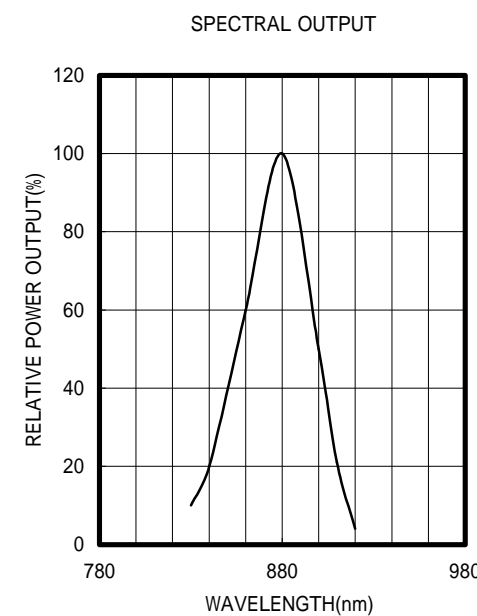
*1:Tw=10uS,T=10mS

*2:Time 5 Sec max,Position:Up to 3mm from the body

2.ELECTRICAL & OPTICAL CHARACTERISTICS (Ta=25)

ITEM	SYMBOL	CONDITIONS	MIN	TYP	MAX	UNIT
Power Output	PO	IF=50mA	1.7	2.8		mW
Forward Voltage	VF	IF=50mA		1.9	2.4	V
Reverse Current	IR	VR=5V			10	μ A
Peak Wavelength	λ	IF=50mA	850	880		nm
Spectral Line Half Width		IF=50mA		40		nm
Half Intensity Beam Angle		IF=50mA		± 10		deg.
Band Width	fc	IF=50mA+20mA _{p-p}		20		MHz
Junction Capacitance	Cj	1MHz ,V=0V		40		pF
Temp. Coefficient of PO	P/T	IF=10mA		-0.05		%/
Temp. Coefficient of VF	V/T	IF=10mA		-2.3		mV/
Fiber-Coupled-Power*1	Pf	IF=50mA		800		μ W
Fiber-Coupled-Power*2	Pf	IF=50mA		200		μ W

*1 200/230 NA=0.4 *2 100/140 NA=0.28



OPTRANS

2-6-11 MASUKATA,TAMA-KU, KAWASAKI 214-0032.JAPAN
TEL.81(44)932-6491 / FAX.81(44)932-8281
E-mail optrans@mb.kcom.ne.jp