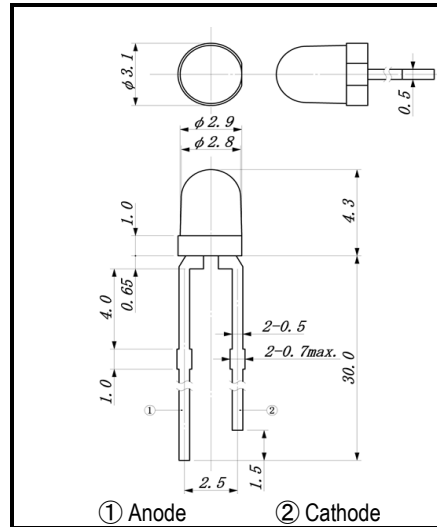
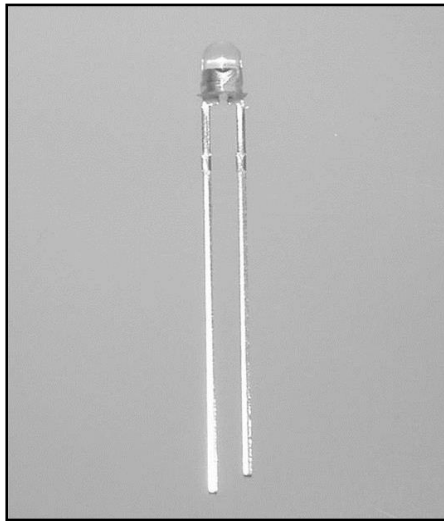


LSF1020C1

Infrared Emitting Diode

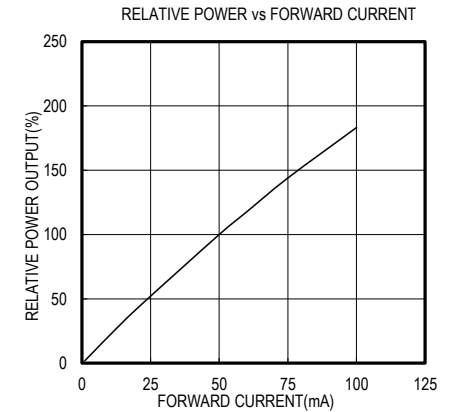
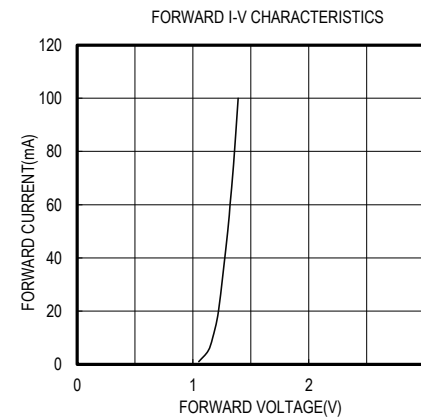


Dimensions (Unit:mm)

- FEATURES**
- High-output Power
 - Compact
 - High Reliability
- APPLICATIONS**
- Optical Switches
 - Optical Sensors

2.ELECTRICAL & OPTICAL CHARACTERISTICS (Ta=25°C)

| ITEM | SYMBOL | CONDITIONS | MIN | TYP | MAX | UNIT |
|---------------------------|------------------|------------|-----|------|------|------|
| Power Output | PO | IF=50mA | | 10.0 | | mW |
| Forward Voltage | VF | IF=50mA | | 1.30 | 1.50 | V |
| Reverse Current | IR | VR=5V | | | 100 | μ A |
| Peak Wavelength | λ_p | IF=50mA | | 1020 | | nm |
| Spectral Line Half Width | $\Delta \lambda$ | IF=50mA | | 40 | | nm |
| Half Intensity Beam Angle | θ | IF=50mA | | ±25 | | deg. |

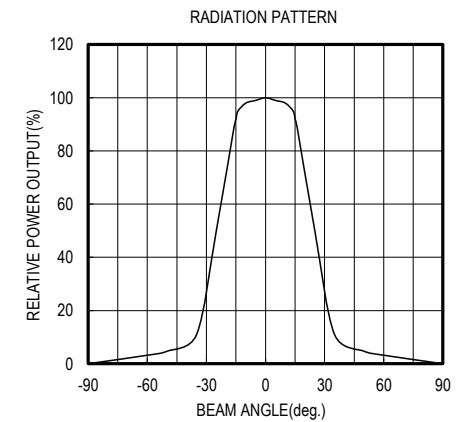
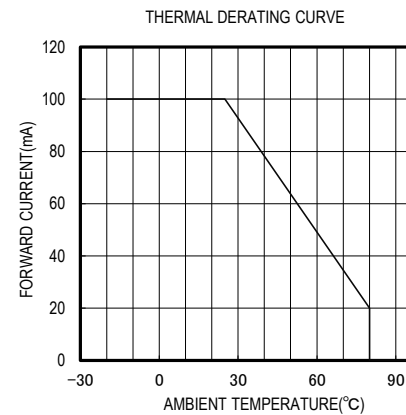
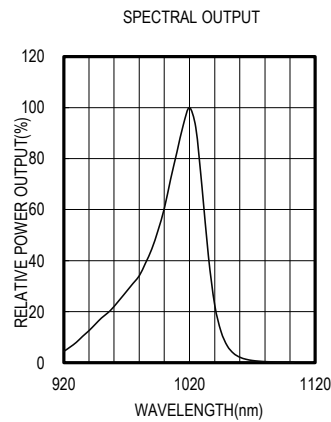


1. ABSOLUTE MAXIMUM RATINGS (Ta=25°C)

| ITEM | SYMBOL | RATINGS | UNIT |
|---------------------------|--------|------------|------|
| Forward Current (DC) | IF | 100 | mA |
| Forward Current (Pulse)*1 | IFP | 1 | A |
| Reverse Voltage | VR | 5 | V |
| Power Dissipation | PD | 100 | mW |
| Operating Temp. | Topr | -20 TO 80 | °C |
| Storage Temp. | Tstg | -30 TO 100 | °C |
| Junction Temp. | Tj | 100 | °C |
| Lead Soldering Temp.*2 | Tls | 260 | °C |

*1:Tw=10uS,T=1ms

*2:Time 5 Sec max,Position:Up to 3mm from the body



OPTRANS

241 NOBORITO,TAMA-KU, KAWASAKI 214-0014,JAPAN
 TEL.81(44)932-6491 / FAX.81(44)932-8281
 E-mail optrans@optrans.com