

IR Point Source LED

LS853SMT

- FEATURES      •Point-Source LED  
                   •Emitting Window Dia.  $\phi$  50 $\mu$ m  
                   •High Reliability
- APPLICATIONS   •Optical Switches  
                   •Edge Sensing

ABSOLUTE MAXIMUM RATINGS (Ta=25°C)

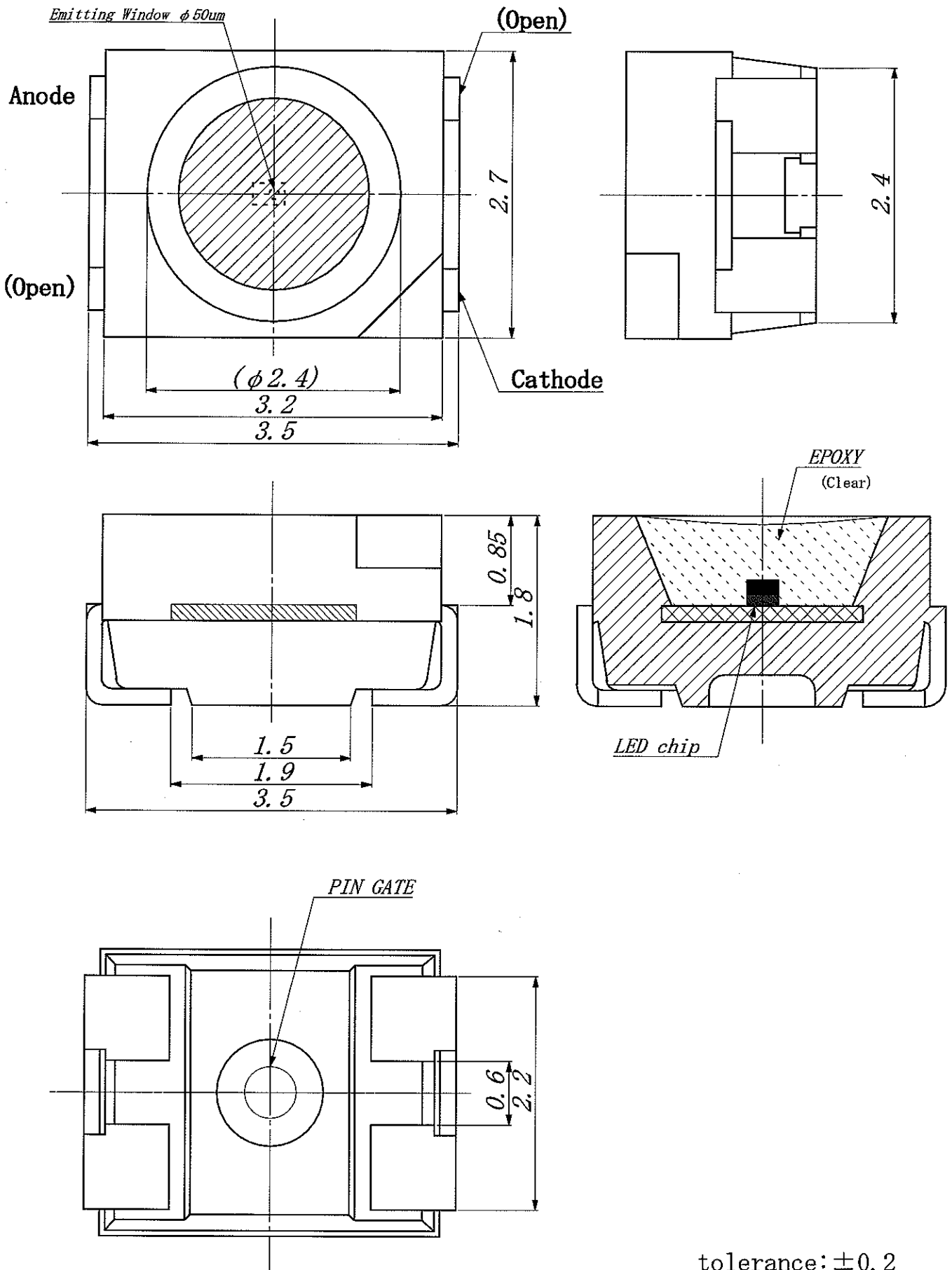
CHARACTERISTICS	SYMBOL	UNIT	RATING
Forward Current	IF	mA	50
Forward Current(Pulse) ※1	IFP	mA	200
Reverse Voltage	VR	V	5
Power Dissipation	PD	mW	100
Operating Temperature Range	Topr	°C	-20~+85
Storage Temperature Range	Tstg	°C	-30~+100

※1 Tw $\leq$ 100  $\mu$  sec [ 4% duty ]

ELECTRICAL & OPTICAL CHARACTERISTICS (Ta=25°C)

CHARACTERISTICS	SYMBOL	UNIT	MIN.	TYP.	MAX.	CONDITIONS
Power Output	Po	mW	2.0	3.0		IF=20mA
Power Output ※1	Po	mW	(8.0)			IFP=200mA
Forward Voltage	VF	V		1.85	2.2	IF=20mA
Reverse Current	IR	$\mu$ A			10	VR=5V
Peak Emission Wavelength	$\lambda$ p	nm		850		IF=20mA
Spectral Line Half Width	$\Delta\lambda$	nm		40		IF=20mA
Half Intensity Beam Angle	$\theta$	deg		$\pm$ 50		IF=20mA

※1 Tw=100  $\mu$  sec [ 4% duty ]



CHK BY	DWG BY T. NAKA	TITLE LS853SMT
DATE. 2008. 10. 10	SCALE UNIT 20/1 mm	DWG. No.